



Wistanstow C.E.
Primary School

Friday Flyer

7th June 2019

flyers@wistanstowprimary.co.uk

Star Pupils

Best Playground Behaviour

Class 1 - Baasima

Class 2 - Lilly

Class 3 - Rhys



Forest School next week

No Forest School this week due to staff illness so the same children are on the list for next week.

Riley	Zac
Jess	Polly
Joel	Ryan
Baasima	

Parents Open Afternoon

Parents are invited to an Open Afternoon on 26th June. You can drop in anytime between 1.30 to 3.00. This will give you an opportunity to visit your child/ren in their classroom/s and share their work with them.

Phonics Screening Check Y1

Can parents go through all the sound cards in Y1 book bags ready for the check next week.

Roman Workshop Monday 10th June

Following a recommendation by Brockton School we have managed to get Ed Abrams to come and do a series of interactive activities with Class 2 and 3 children based on their current history/English topic on the Romans. It should be a fun packed informative day. This is the second school workshop to be funded by the Smithy Shop donation. A big thank you to them.

Opportunity to work in school

We are looking to employ someone from 1st July 2019 for the following:

Lunchtime Supervisor Tuesdays and Wednesdays and every other Monday 12- 1pm.
Casual Classroom Assistant Mondays 1-3.15pm - supporting the PE coach.

Additional hours will be offered on an ad hoc basis to take children to sports' events.

Please contact school for further information

admin@wistanstowprimary.co.uk

Y5/6 residential visit

We are going to change our outdoor pursuits residential venue from PGL in Shrewsbury to Abernant Lake, Manor Adventure in Wales. We are planning to go in June 2020 and in the meantime please go to manoradventure.com for more information. A representative from Abernant will come and talk to children and parents in September.

PTA news

Please look at the newsletter below.

Orienteering Success

Congratulations to the following Y5/6 children competing against other children in South Shropshire schools:

6 th	Matthew and Jordy	14mins
8 th	Sky and Bella	15mins
9 th	Mary and Alex	15mins 20 secs

Swimming

Dates	Day	Time Depart	Time Return	Swim Times	From	To
June:11,18,25 July: 9	Tuesday	10:00	11:40	10:30 - 11:30	Wistanstow CE Primary School	Ludlow Leisure Centre

Y6 transition to Church Stretton Secondary

Tuesday 18th June - New Intake Day

Tuesday 18th June 5pm - Admission meeting for parents

With this Flyer

- PTA news
- Instrument lessons form
- Plant Sale Poster
- Curry and quiz night poster hosted by Wistanstow players.

New Dates for the diary

Monday 10th June - Roman workshop KS2

Wednesday 19th June - Y6 to Crucial Crew

There will be no charge for this visit. A letter has gone home with Y6 pupils. We will be leaving school at 8.45am

News for the Flyer

If you have any news/notices of community/local events please email us on:

flyers@wistanstowprimary.co.uk

Diary Dates

Sat 8th June – Plant Sale

Mon 10th June -Y1 Phonic Screening Check this week

Mon 10th June – KS2 Roman workshop

Thursday 13th June – KS2 athletics

Tuesday 18th June – New Intake Day Church Stretton School Y6.

5pm – Admission meeting for parents.

Wednesday 19th June – Y6 to Crucial Crew – 8.45am

Thurs 20th June– Courtyard theatre company including short performance after school in Village Hall

Wedn 26th June – Parents’ Open Afternoon 1.30-3pm

Tues 2nd July – Schools Games Finals

Wedn 3rd July – YR/Y1 Festival

Thurs 4th July – School Play – 5.45pm

Fri 5th July – Athletics finals.

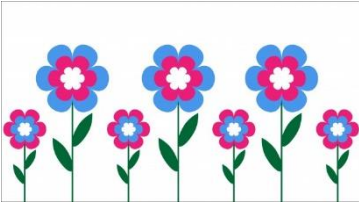
Fri 12th July – Sport’s Day – 10.30

Wedn 17th July – Leaver’s Service 2pm

Thursday 18th July, 6:30-8pm Leavers’ Disco

Fri 19th July – Last Day of Term.

PTA NEWS



Plant Sale - Saturday 8th June 10am-2pm

Don't forget to invite all your friends and family to the school plant sale this Saturday! This is a great chance for parents, teachers and children to socialise.

Class 3 will be running stalls as usual and have made some lovely bird boxes in class to sell on the day.

Also back by popular demand is the "Garden on a Plate" competition. Children are asked to create a miniature garden on a plate. They can use leaves, flowers, grass, pebbles, twigs etc, etc! Let their imaginations run wild! One winner per class will be chosen & will receive a prize. Please label the plate underneath with your child's name and class number.

Don't forget that we need donations of plants and cakes too! Please drop them off at school on Friday afternoon or first thing Saturday morning. Jams and chutneys also welcome!

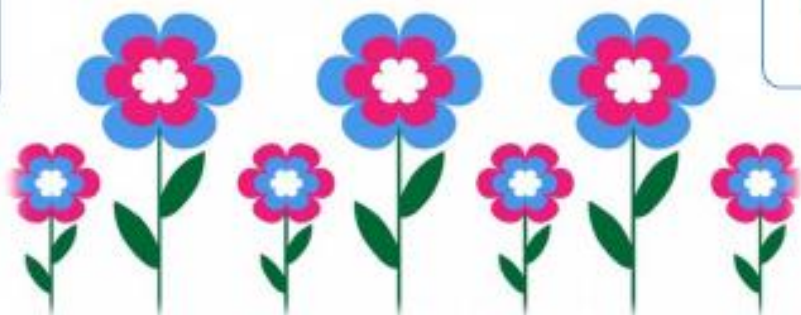
We hope to see many families at this lovely school event!



Bag2School collection

A big thank you to everyone who donated items for the Bag2School collection last month. We raised £58.40 for the school.

*Outspan
nursery*



*Annie's hardy
local plants*

PLANT SALE

Saturday 8th June

10am – 2pm

Wistanstow Primary School

*Locally-grown garden
plants, house plants,
herbs and vegetable
seedlings.*

Teas & cakes too!



CURRY & QUIZ

with a twist

**THURSDAY
13TH JUNE**

8PM

**WISTANSTOW
VILLAGE HALL**

TEAMS OF 4

**TICKETS
£7.50 pp**

**ON THE DOOR
£10 pp**

BAR * REFRESHMENTS * RAFFLE

VEGAN & GLUTEN FREE OPTIONS AVAILABLE

TICKETS ON SALE 1ST JUNE

- **WISTANSTOW SMITHY SHOP**
- **NEWINGTON GARAGE SERVICES**

OR CALL 07875 666182

Hosted by
Wistanstow Players
In aid of the new
stage